

AMERICAN[®] STAIR TREADS

152 Rollins Avenue #102

Rockville, MD 20852

800-762-9010

240-780-3309 (fax)

<http://www.americanstairtreads.com>

Coved Rubber Stair Tread Risers



Coved Rubber Stair Tread Risers are rubber stair risers with a toe that covers the rear of the stair tread below.

Coved tread risers are more attractive than straight stringers and make for easier cleaning. A 5/8" toe fits flush on top of the rear of the tread below.

Both the length and height of these stair risers can easily be cut to fit and reduces fitting procedures, which reduce installation costs.

Match any rubber tread color with an associated riser color below.

SPECIFICATIONS

- Thickness: 1/8"
- Height: 7"
- Length: 36" - 72"
- Depth: 5/8"

Federal Spec: RR-T-650E Type B and Federal Spec: ZZ-T-001237 (GSA-FSS)

Flame Spread Rate: 75 or less (ASTM-E-84)

Install with Neoprene Contact Cement, Water-based Contact Adhesive or Rubber Flooring Adhesive.

Item No: STRSRCV

Standard Sizes (Approximate)

Size	Qty. 1-25	Qty. 26-50	Qty. 51-100	Qty. 101-250
36" Wide	\$26.00	\$23.00	\$20.00	\$18.00
42" Wide	\$31.00	\$28.00	\$25.00	\$23.00
48" Wide	\$35.00	\$32.00	\$29.00	\$27.00
54" Wide	\$39.00	\$36.00	\$33.00	\$31.00
60" Wide	\$43.00	\$40.00	\$37.00	\$35.00
72" Wide	\$51.00	\$48.00	\$45.00	\$43.00

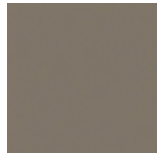
Solid Colors



Black



Slate Grey



Mid Grey



Light Grey



Dark Brown



Medium Brown



Beige



Burgundy

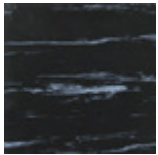


Dark Blue

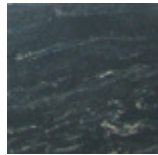


Dark Green

Multi-Tone Colors



Black Marble



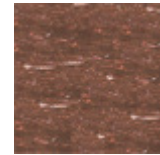
Slate Marble



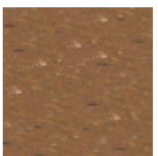
Mid Grey Marble



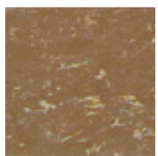
Grey Marble



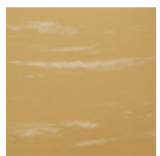
Mahogany Marble



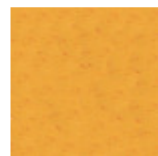
Walnut Marble



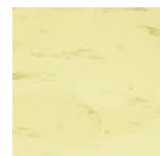
Oak Marble



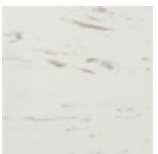
Birch Marble



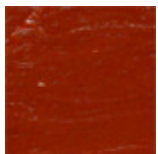
Peach Marble



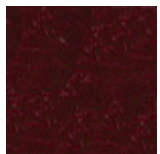
Beige Marble



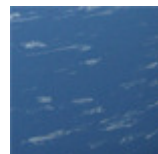
Oatmeal Marble



Red Marble



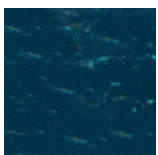
Maroon Marble



Blue Marble



Green Marble



Dark Teal Marble